

EQUIPMENT EARTHING DETAILS 132kV CIRCUIT BREAKER

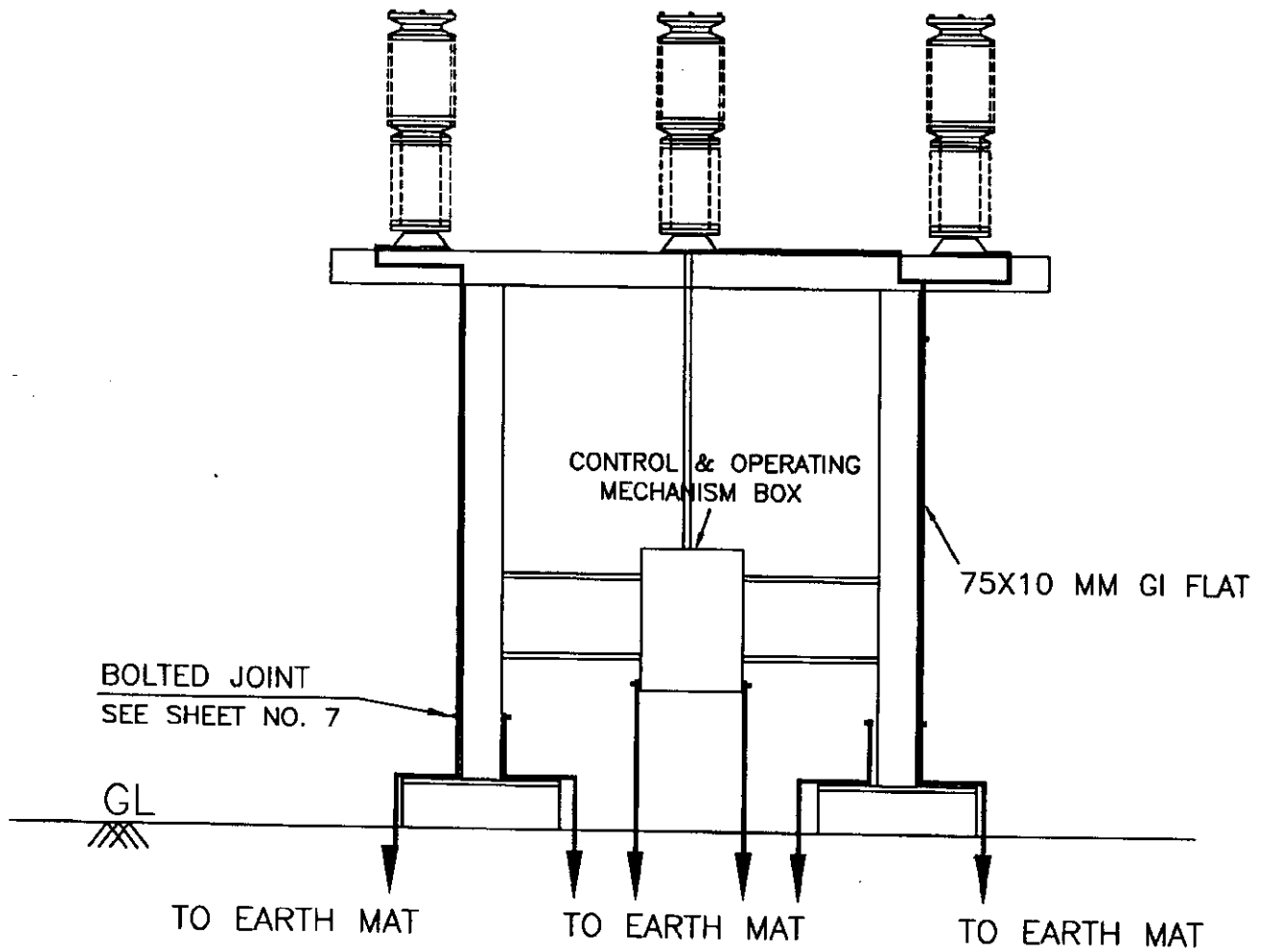
COMPUTER REF. NO.

DRG. No.

TB-4-311-509-004

REV. 00

SHEET No.
02A



EQUIPMENT EARTHING DETAILS 33kV CIRCUIT BREAKER

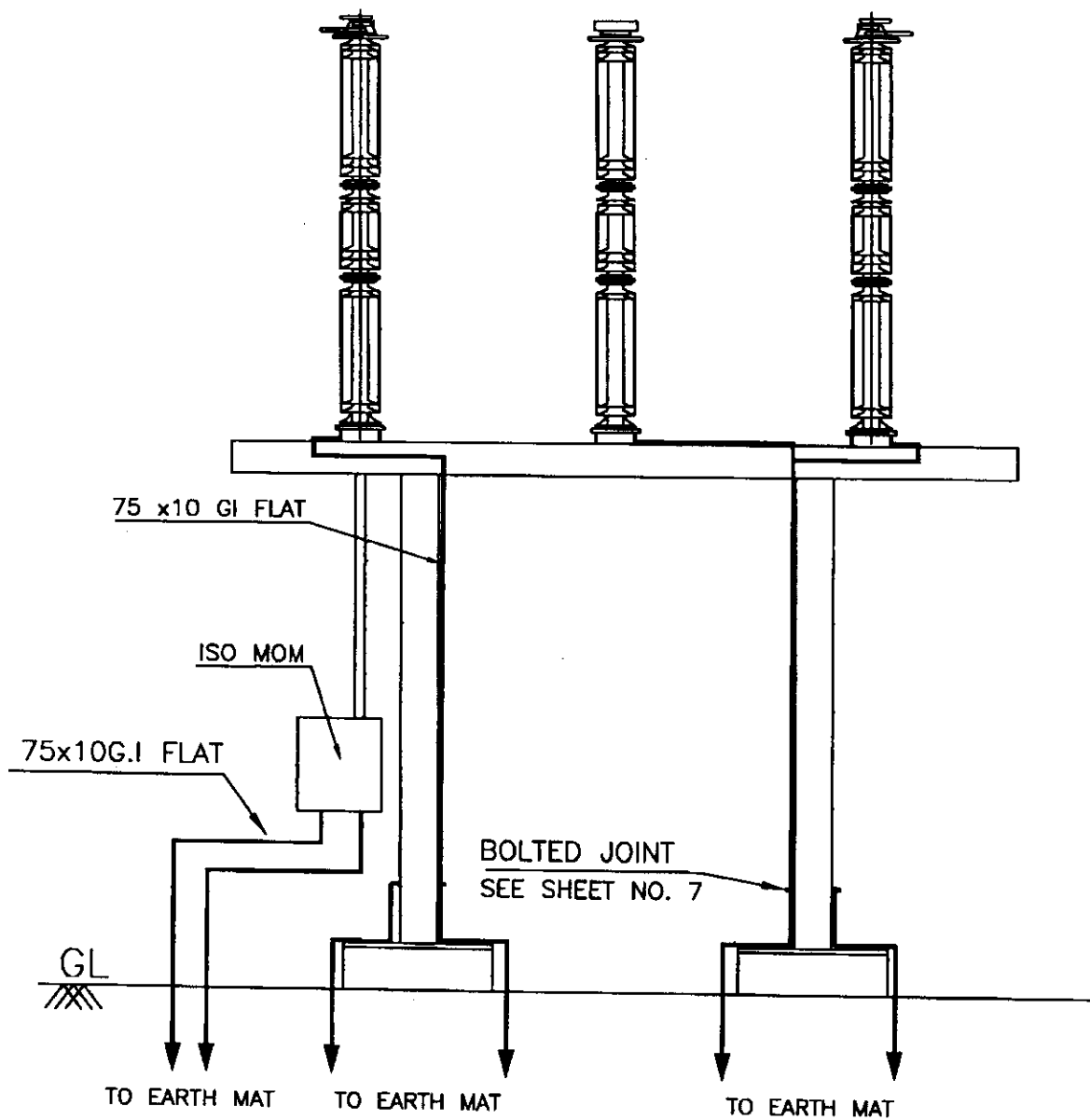
COMPUTER REF. NO.

DRG. No.

TB-4-311-509-004

REV. 00

SHEET No.
02B



EQUIPMENT EARTHING DETAILS

132kV ISOLATER HORIZONTAL DOUBLE BREAK WITHOUT E/S

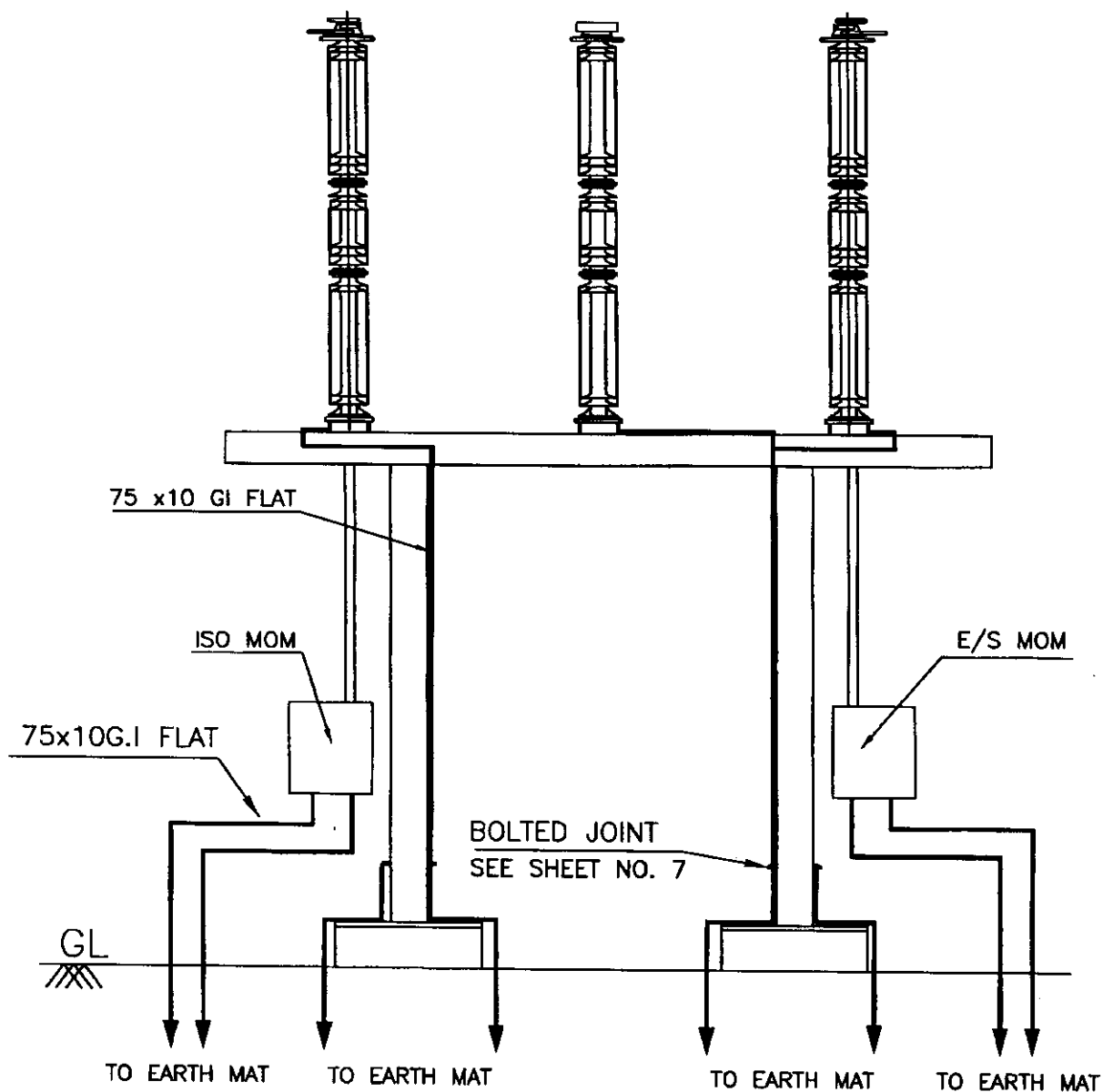
COMPUTER REF. NO.

DRG. No.

TB-4-311-509-004

REV. 00

SHEET No.
03



EQUIPMENT EARTHING DETAILS

132kV ISOLATER HORIZONTAL DOUBLE BREAK WITH ONE E/S

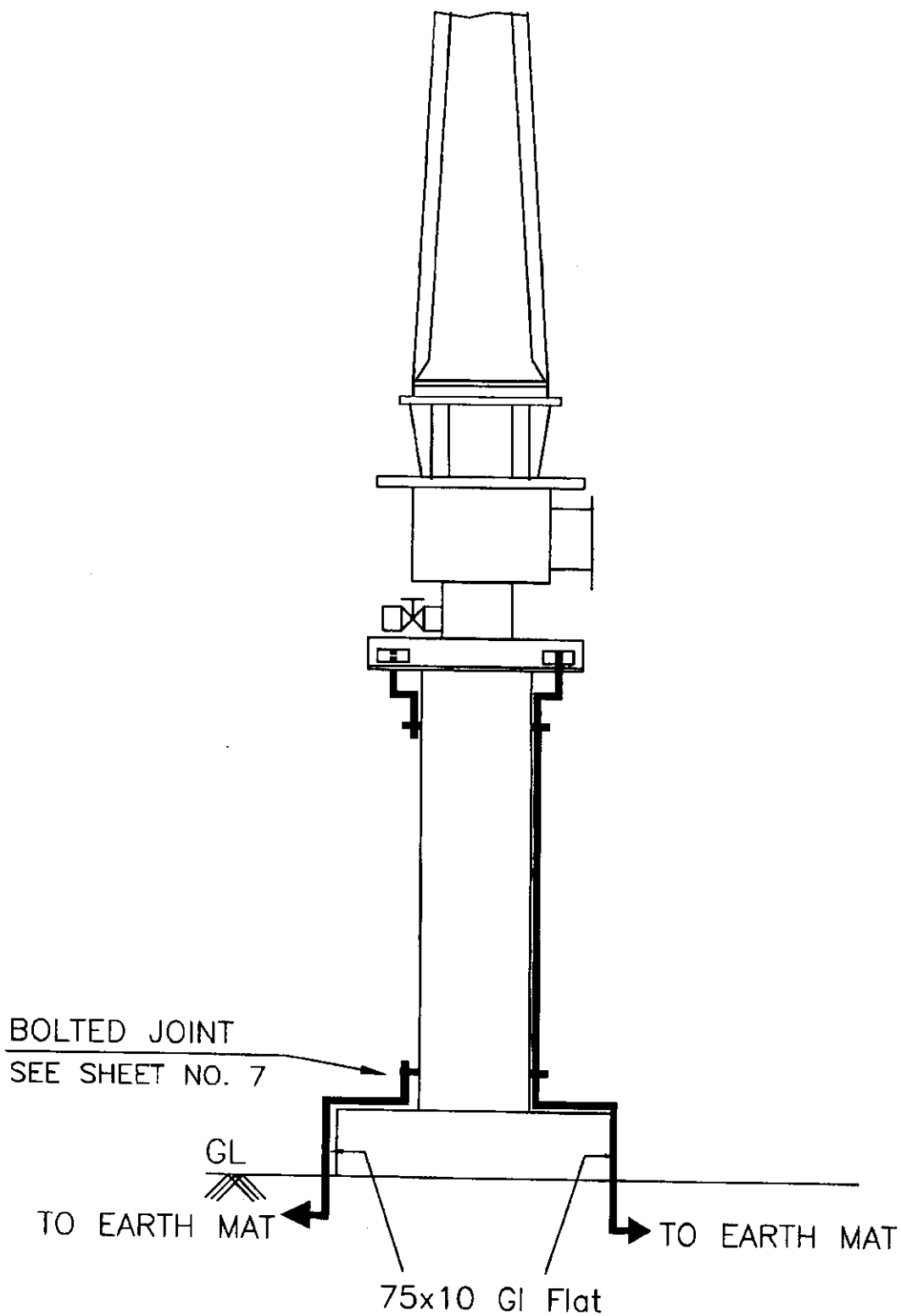
COMPUTER REF. NO.

DRG. No.

TB-4-311-509-004

REV. 00

SHEET No.
04



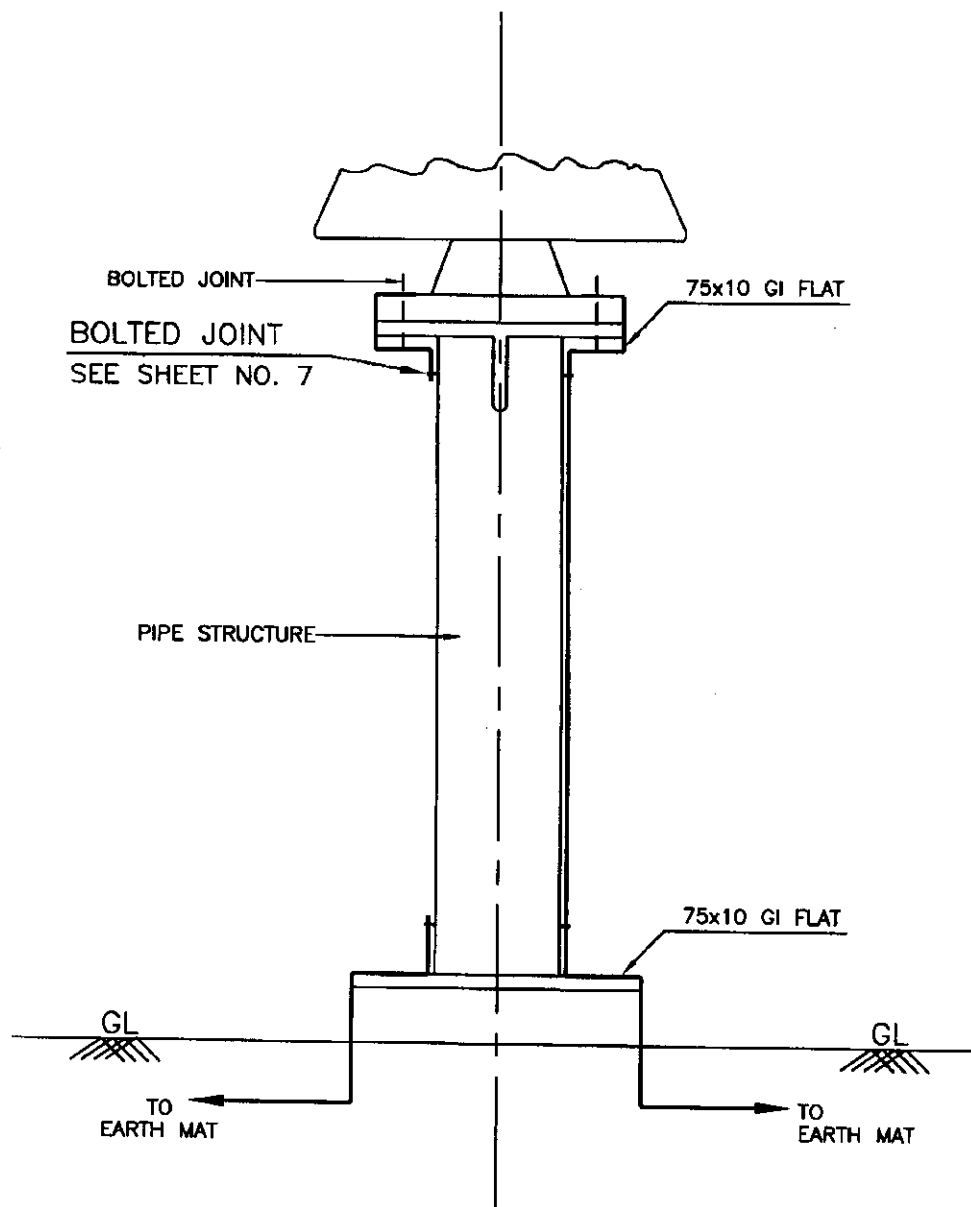
EQUIPMENT EARTHING DETAILS 132/33kV CURRENT TRANSFORMER

COMPU. DRG. REF.

DRG.NO.

TB-4-311-509-004

SHEET No.
05



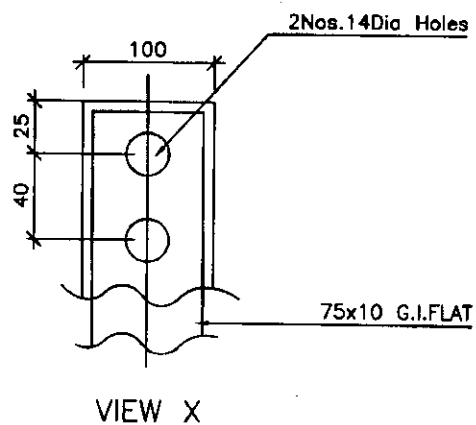
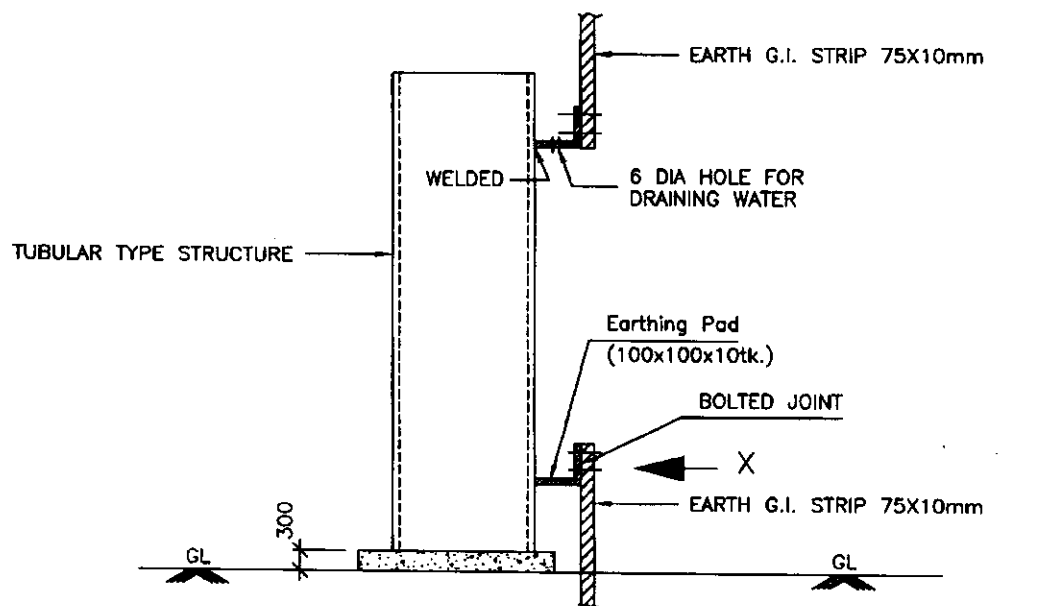
EQUIPMENT EARTHING DETAILS 132kV POST INSULATOR

COMPUTER REF. NO.

DRG. No.

TB-4-311-509-004

SHEET No.
06



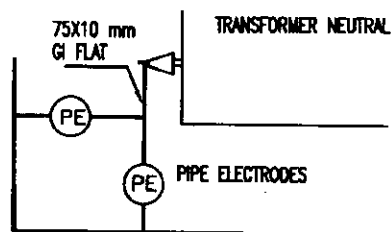
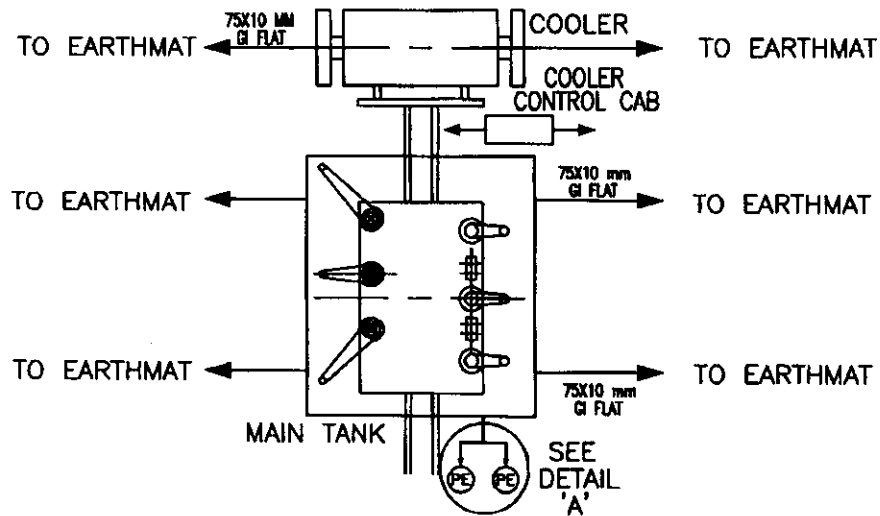
EQUIPMENT EARTHING DETAILS FIXING ARRANGEMENT OF EARTH STRIP CLAMP FOR TUBULAR TYPE STRUCTURE

COMPUTER REF. NO.

DRG. No.

TB-4-311-509-004

SHEET No.
07



DETAIL A

NOTES:—

1. EARTH CONTINUITY ACROSS GASKETED JOINTS MUST BE ENSURED USING FLEXIBLE OR FLAT.
2. ALL ACCESSORIES ASSOCIATED WITH TRANSFORMER LIKE COOLING BANKS, RADIATORS, MAIN TANK, MARSHALLING KIOSK ETC. SHALL BE CONNECTED TO THE EARTHING GRID AT MINIMUM TWO POINTS.

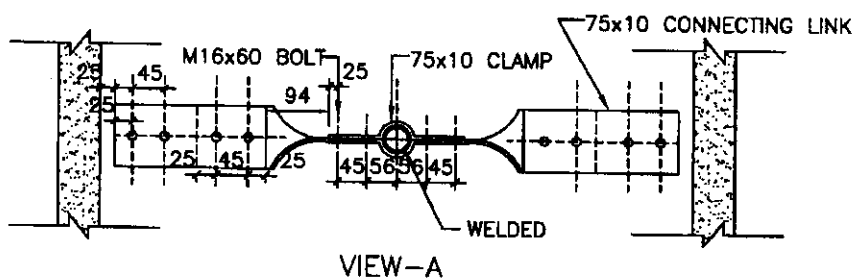
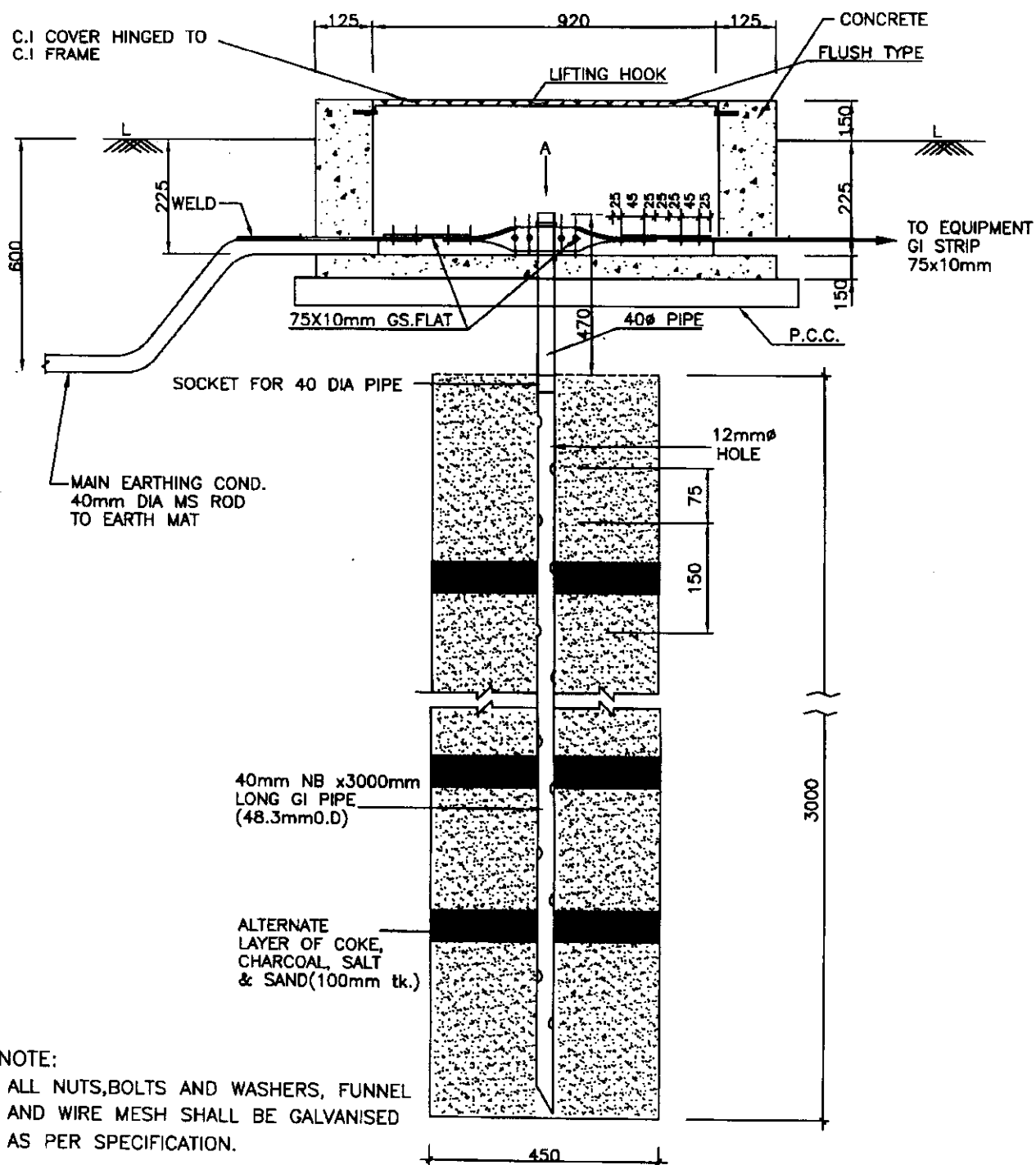


**EQUIPMENT EARTHING DETAILS
31.5MVA TRANSFORMER**

DRG. No. TB-4-311-509-004

REV. 00

SHEET No.
08



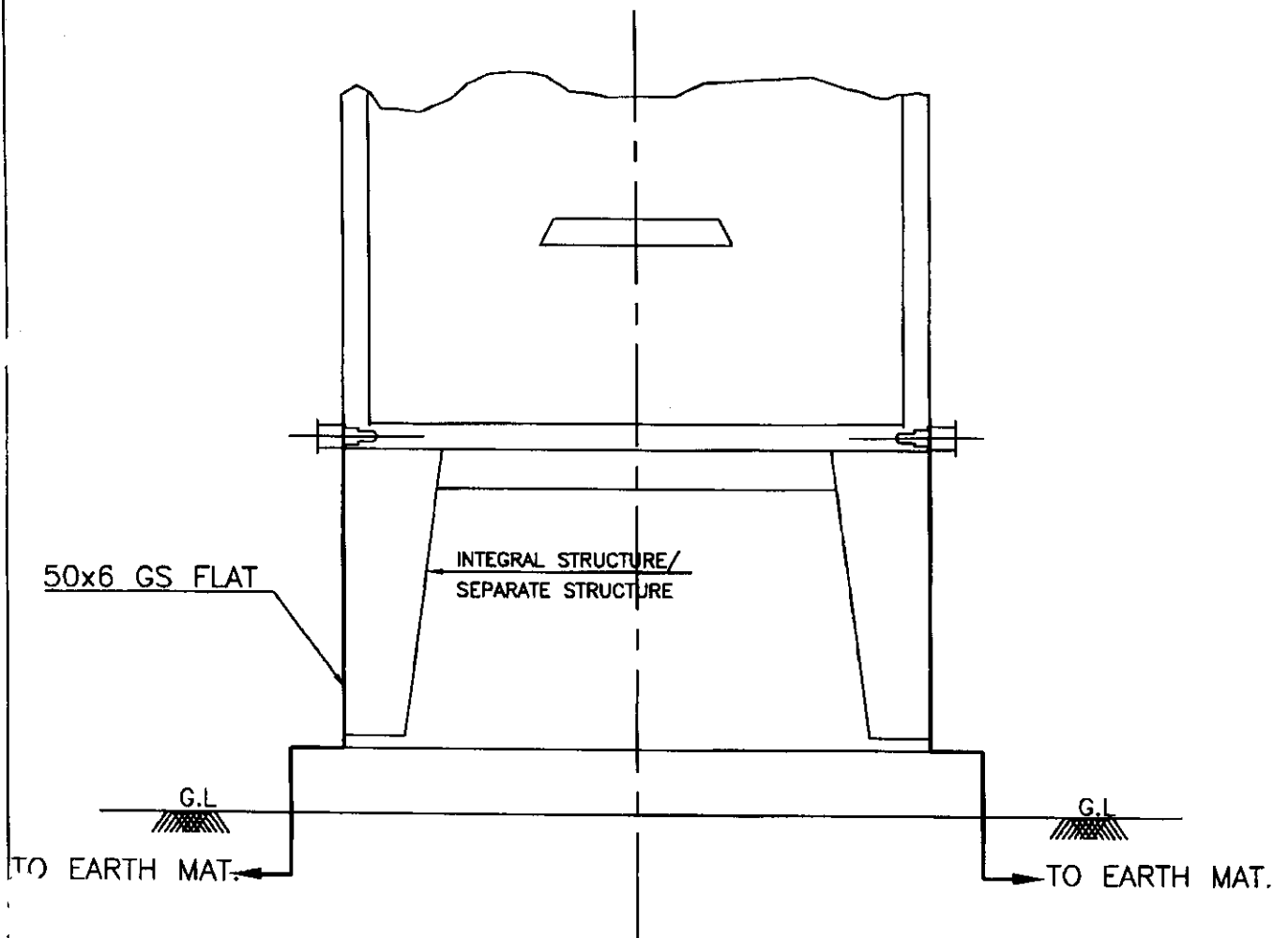
EQUIPMENT EARTHING DETAILS
DETAILS OF PIPE EARTH ELECTRODE
IN TREATED EARTH PIT (PE) FOR NEUTRAL EARTHING OF TRANSFORMER

COMPUTER REF. NO.

DRG. No.

TB-4-311-509-004

SHEET No.
09



EQUIPMENT EARTHING DETAILS MARSHALLING KIOSK EARTHING

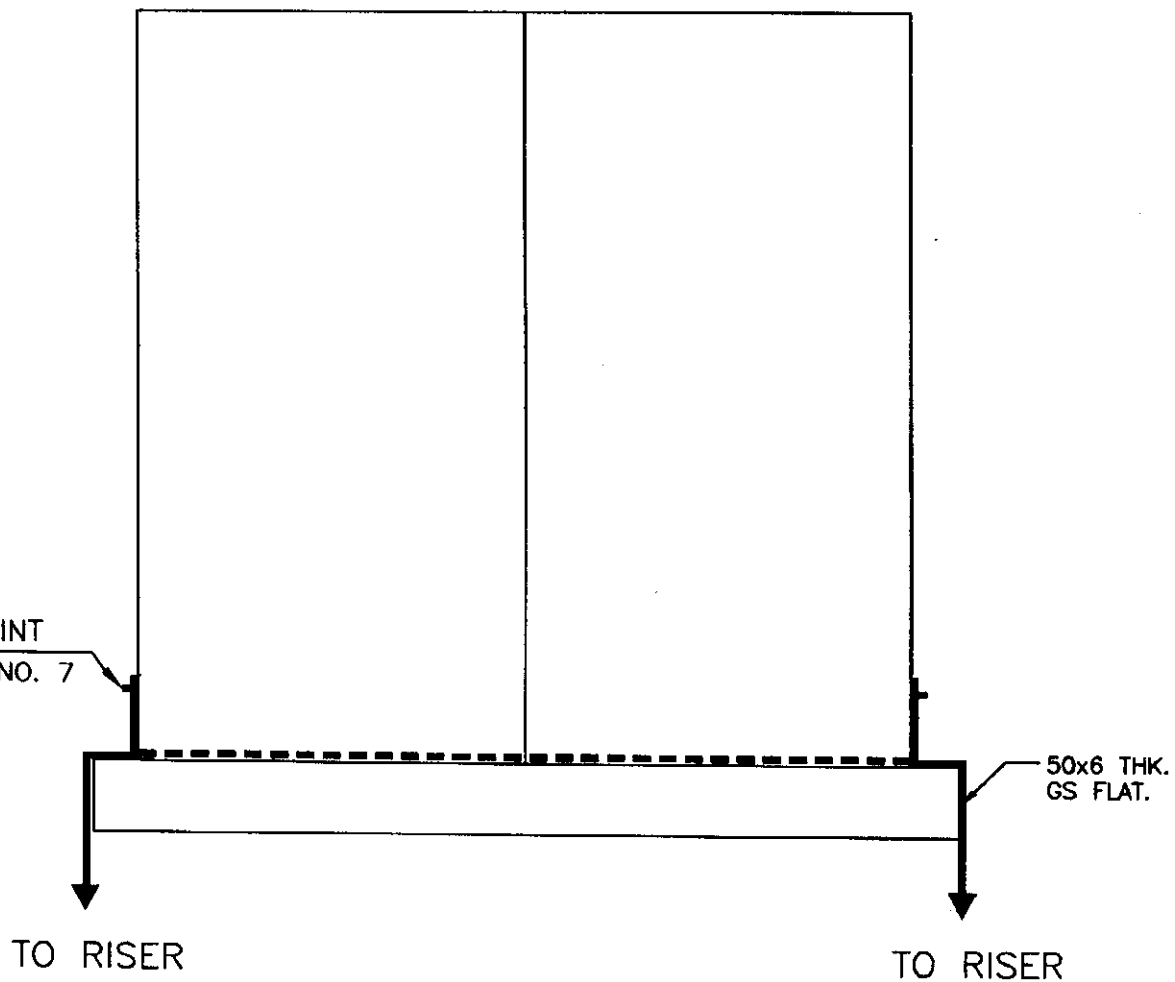
COMPUTER REF. NO.

DRG. No.

TB-4-311-509-004

SHEET No.
10

BOLTED JOINT
SEE SHEET NO. 7



NOTE:

FLEXIBLE EARTHING CONDUCTOR BETWEEN DOOR, PANEL &
GLAND PLATE ARE SHOWN IN OGA DRAWINGS.



EQUIPMENT EARTHING DETAILS
PANELS EARTHING

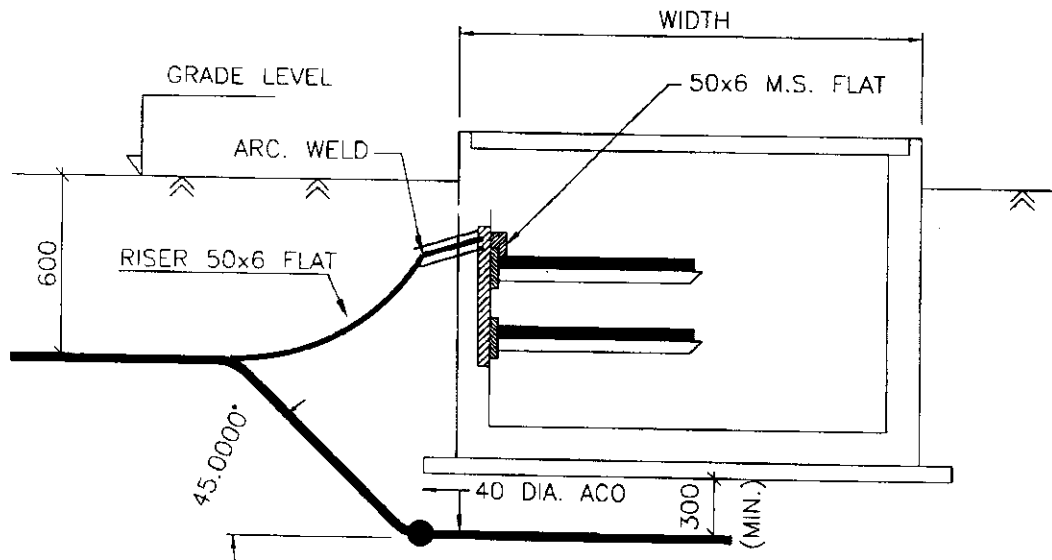
COMPU. DRG. REF.

Report No.

TB-4-311-509-004

SHEET No.

11



NOTE:

1. ALL TRENCHES SHALL BE EARTHED AT AN INTERVAL OF 10M ALONG THE LENGTH OF TRENCH & FREE ENDS.
2. THE EARTH STRIP (50x6 M.S. FLAT) SHALL BE WELDED TO EMBEDDED PLATE AT EVERY 0.75M INTERVAL & CONTROL ROOM AT EVERY 2M INTERVAL
3. THE CABLE RACKS ARE PROVIDED ON BOTH SIDES OF THE TRENCH, BOTH SIDES SHALL BE EARTHED AS PER ABOVE.
4. CABLE EARTHING WILL BE DONE AS PER SPECIFICATION.



EQUIPMENT EARTHING DETAILS
CABLE TRENCH EARTHING

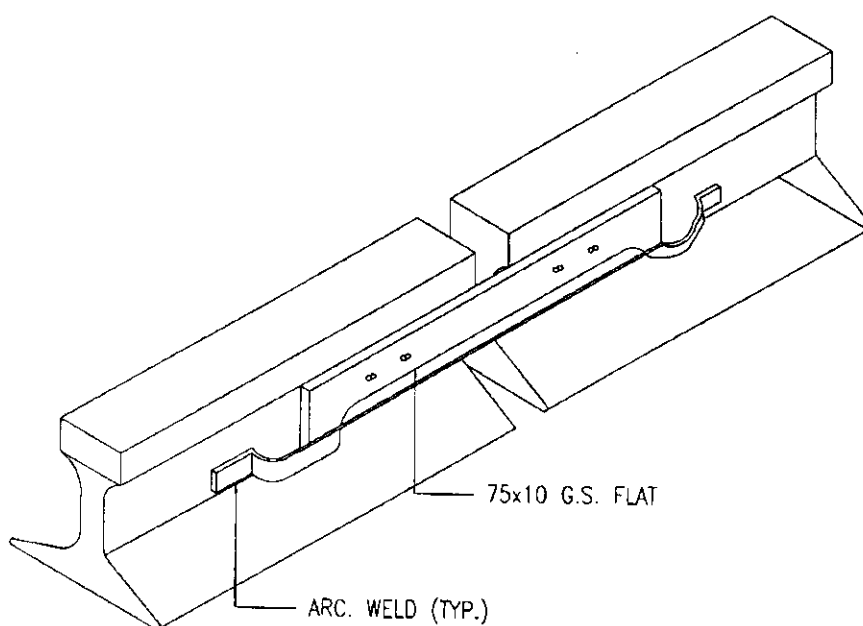
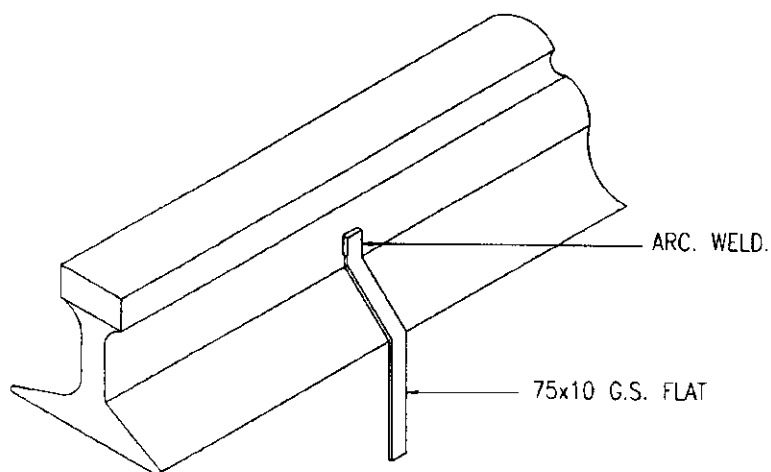
COMPU. DRG. REF.
E:RAWAT/BELLARY/EQP/SH12

DRG. NO.

TB 4 311 509 004

REV. 01

SHEET
12



NOTE:—

EACH RAIL TRACKS WITHIN SWITCHYARD SHALL
BE EARTHED AT BOTH ENDS.



EQUIPMENT EARTHING DETAILS

RAIL BONDING

COMPU. DRG. REF.

DRG. NO.

TB 4 311 509 004

REV. 00

SHEET No.
13